

Compliance auditing

5 pieces of the puzzle

1 | Risk assessment

Identify key risk areas such as new service lines, high dollar services



2 | Review

Have Subject Matter Expert perform review



3 | Corrective action plan

Create a CAP to prevent errors



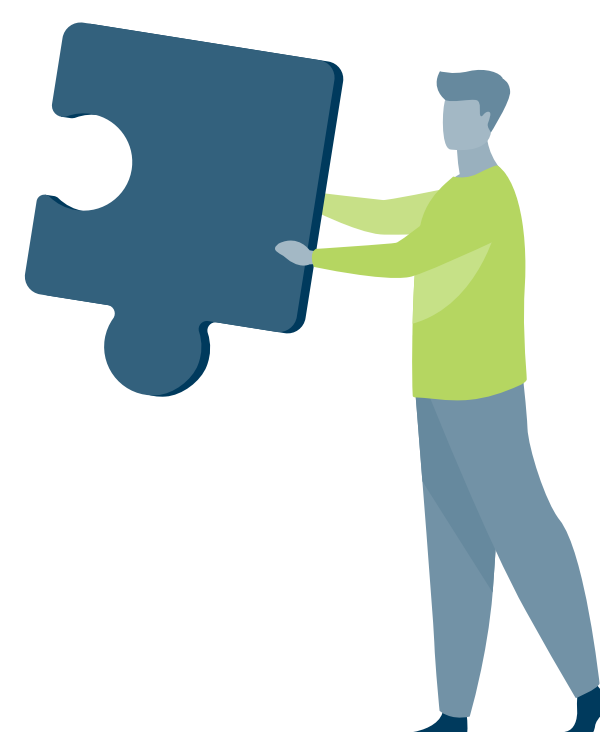
4 | Monitoring

Continue to monitor to help ensure compliance with the CAP



5 | Continue the process

Risk assessments are an ongoing process



Contact us:

HCCompliance@berrydunn.com

berrydunn.com/services/healthcare-compliance