

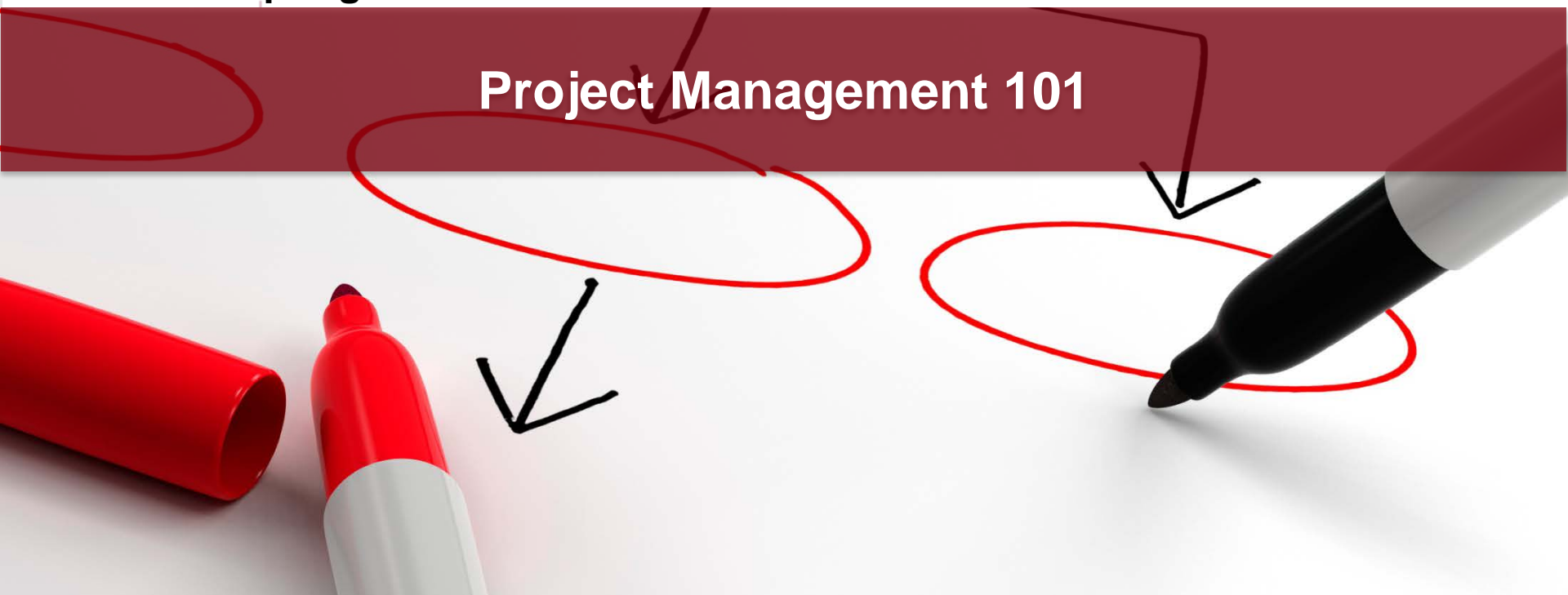


NEW HAMPSHIRE
HEALTH CARE ASSOCIATION

Spring Conference 2015

Taking Care of Those Who Took Care of Us

Project Management 101



Agenda

- Introductions
- Overview and PMI
- Fundamentals of Project Management
- Real World Examples
- Wrap Up

DAN VOGT, BS, CPEHR, PMP

Senior Manager in BerryDunn's
Management and IT Consulting Practice

Certified Professional in Electronic Health
Records (CPEHR)

Project Management Professional (PMP)

Lean Six Sigma Greenbelt

Technical advisor to the Maine Health Care
Association's EHR Work Group

Lehigh University Alumni

Dad of a 19 month old daughter



WHAT IS PROJECT MANAGEMENT?

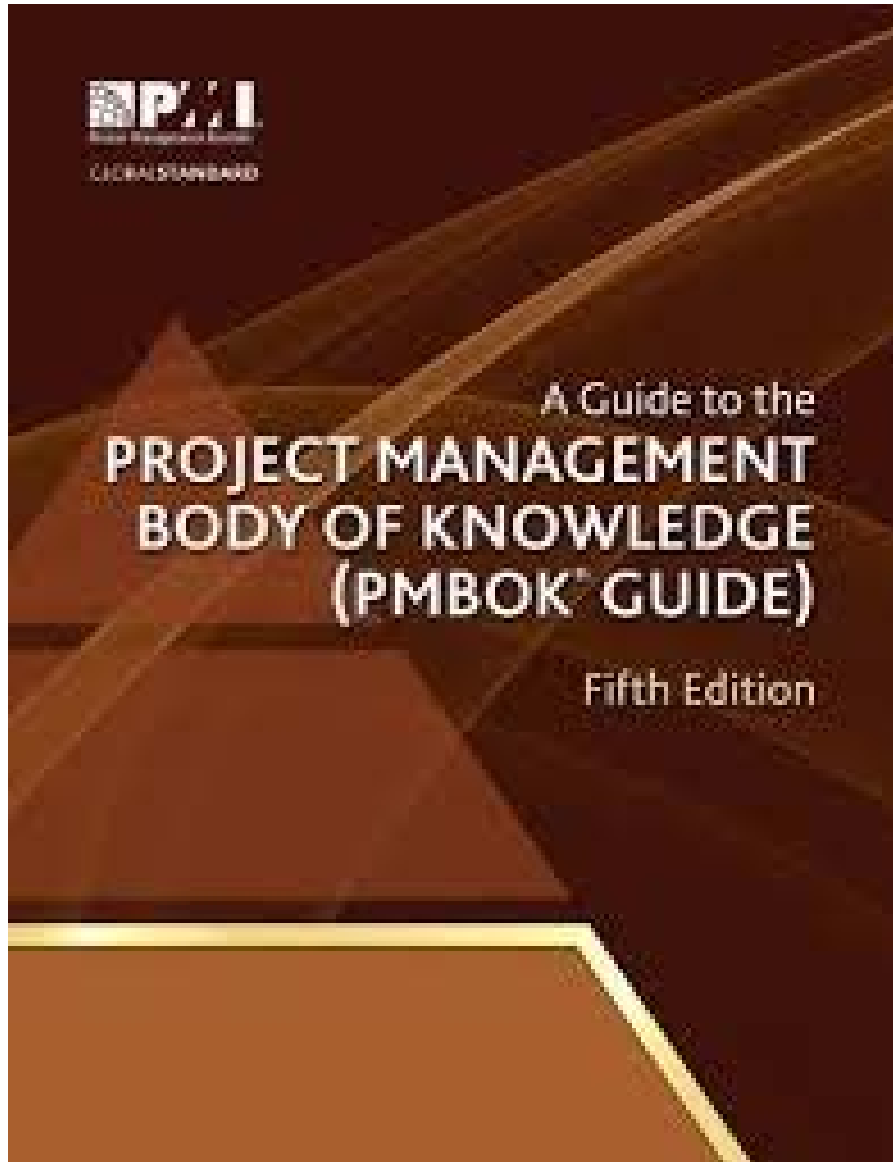




The application of knowledge, skills, tools, and techniques to project activities to meet the project requirements.¹

1. Project management body of knowledge (PMBOK)

The Project Management Body of Knowledge (PMBOK)



- “An inclusive term that describes the sum of knowledge within the profession of project management” – PMBOK 4th Edition
- A framework of tools, techniques, and approaches to use in managing a project
- PRINCE2 – a project management methodology used by the British Government



Building professionalism in project management in the Granite State!

PMI New Hampshire Chapter (C238)

The NH chapter of the Project Management Institute is designed expressly to serve and support project management professionals in the Granite State.

We offer educational and fun membership meetings, networking, and professional development support for current and future PMPs.

We enrich New Hampshire's business community through membership development and great customer support.

• Attend Program Events and Activities

We offer **professional development** programs and **networking opportunities** at our monthly chapter membership meetings. We've got a stellar line-up planned right up through June. **Making connections** with the right people is rewarding on many levels, and is critical for those who are feeling the job-hiring "squeeze." Check out our [events page](#) for highlights. **Earn PDUs for attending.**



Upcoming Events

Annual Meeting

May 20, 2015

Time: 06:00 PM - 09:00 PM

Category: Chapter Meetings

Location: Puritan Backroom, Manchester

New Media and the Project Manager

Jun 17, 2015

Time: 06:00 PM - 09:00 PM

Category: Chapter Meetings

Location: Portsmouth Country Club, Portsmouth

Resources

Member Resources

- ✧ [President's Letter](#)
- ✧ [Job Postings](#)
- ✧ [PMI NH Journals & Newsletters](#)
- ✧ [Linkedin Group](#)
- ✧ [netPM Networking Group](#)
- ✧ [Previous Meetings - PDU info](#)
- ✧ [Renew Your Membership](#)

The Challenge of the PMBOK



Scope



SUNDAY WEDNESDAY THURSDAY FRIDAY SATURDAY SUNDAY

Schedule



Cost / Resources



Iron Triangle

Schedule

Scope

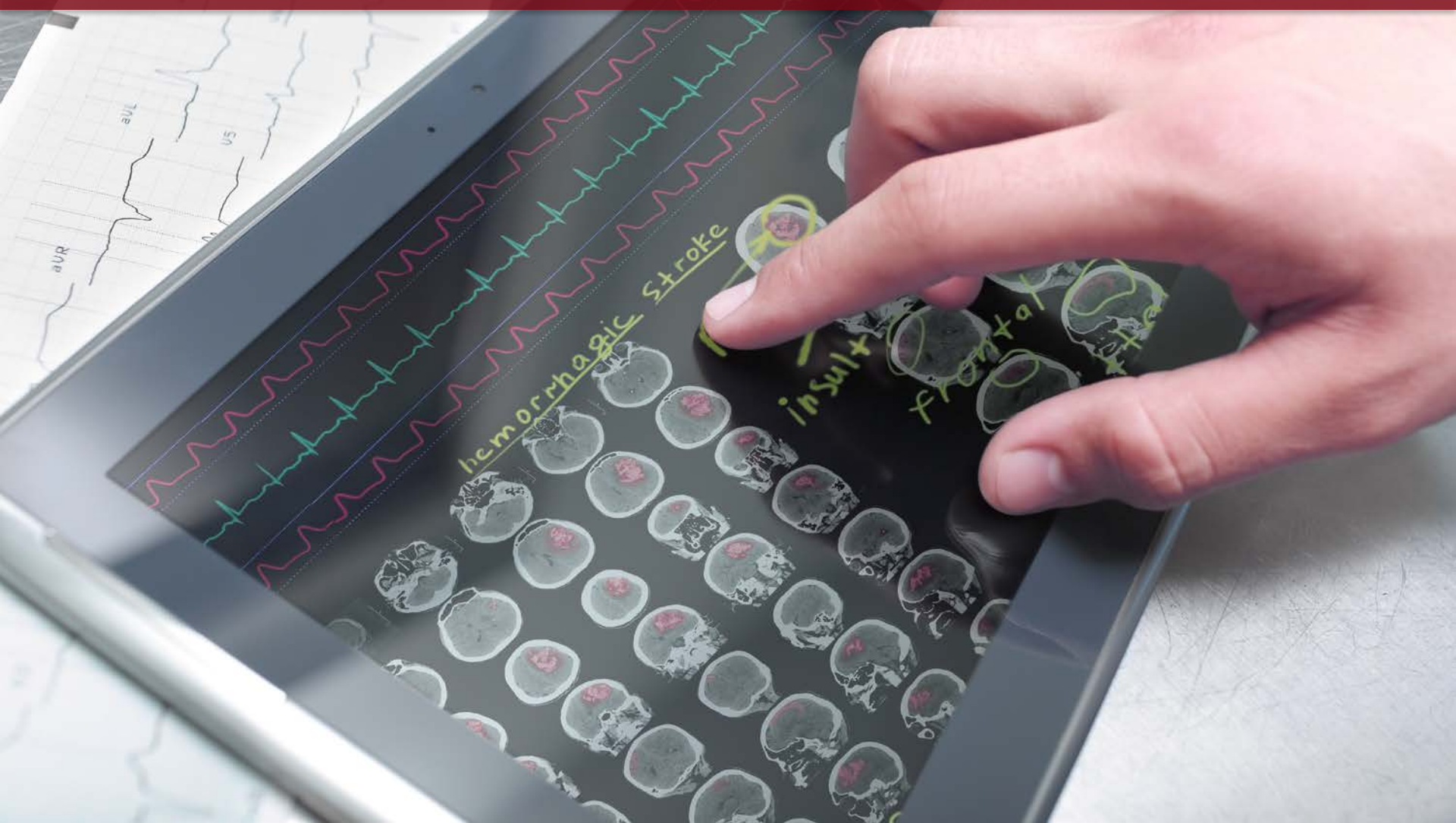


Cost

Real World Example: ICD-10



Real World Example: Electronic Health Records

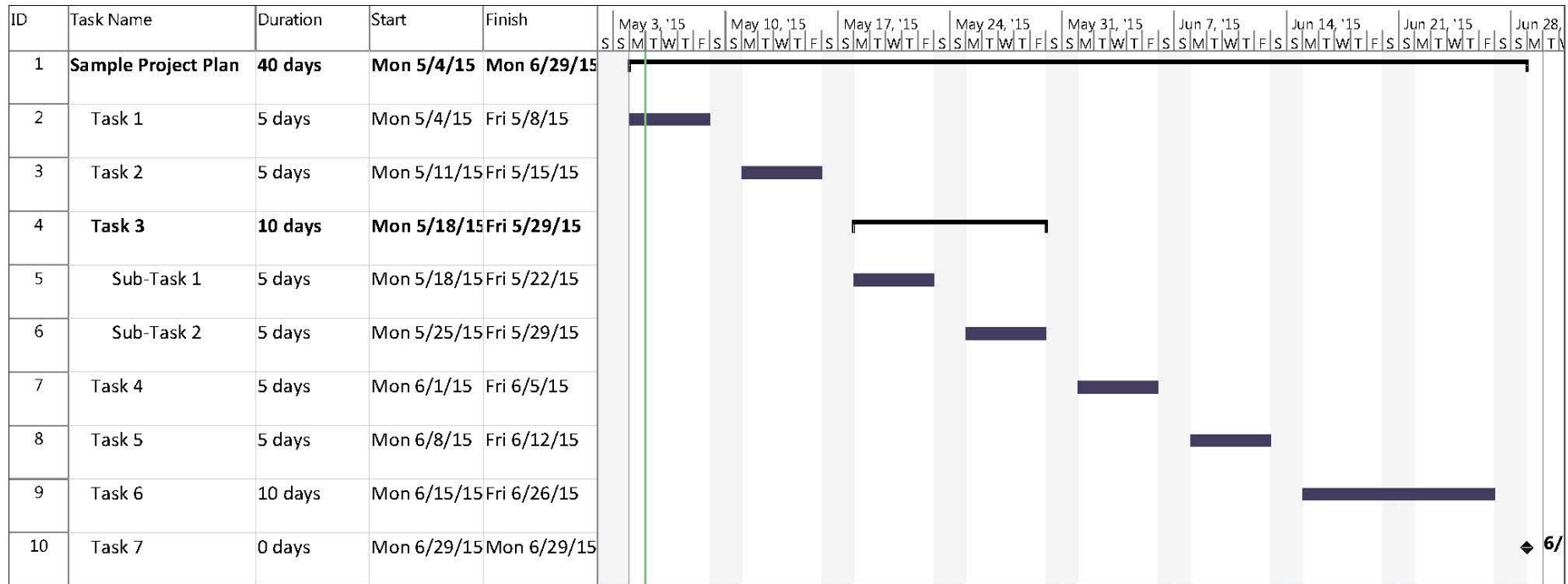


Project Charter

Charter

Signature _____

Project Plan



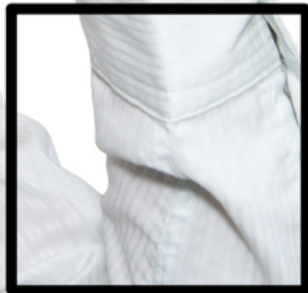
Acceptance Criteria



Accept



Accept with note



Not Accept

Staffing Plan

Key Roles:

- ❖ Project Sponsor
- ❖ Project Manager
- ❖ Project Team
- ❖ Subject Matter Experts



Communications Plan



Status Reporting



Project Management 101

BerryDunn Project Manager	Dan Vogt	Last updated	May 6, 2015
NHHCA Project Manager	Kristen Schmidt	Status	Green

Project Status Summary	Overall the presentation is on track. No risks or issues noted. Expecting 20 – 30 participants at the session.
------------------------	----------------------------------------------------------------------------------------------------------------

Progress This Period	Key Issues / Risks / Obstacles			
<ul style="list-style-type: none">Completed speaker contractDeveloped PowerPoint slidesDid dry run of presentation	<ul style="list-style-type: none">None noted at this time			
Planned Next Period	Project Milestones			
	Item	Date	Status	Comments
	Spring Conference	May 7, 2015		

Risk Management

A close-up photograph of a computer keyboard. The central focus is a bright red key with the word "Risk" printed in white. Surrounding this key are several black keys: "F12" to the upper left, a key with "+" and "=" to the lower left, a key with "}" to the bottom, and a large "Enter" key to the lower right. The lighting creates soft shadows, emphasizing the three-dimensional shape of the keys.

Planning for Risk



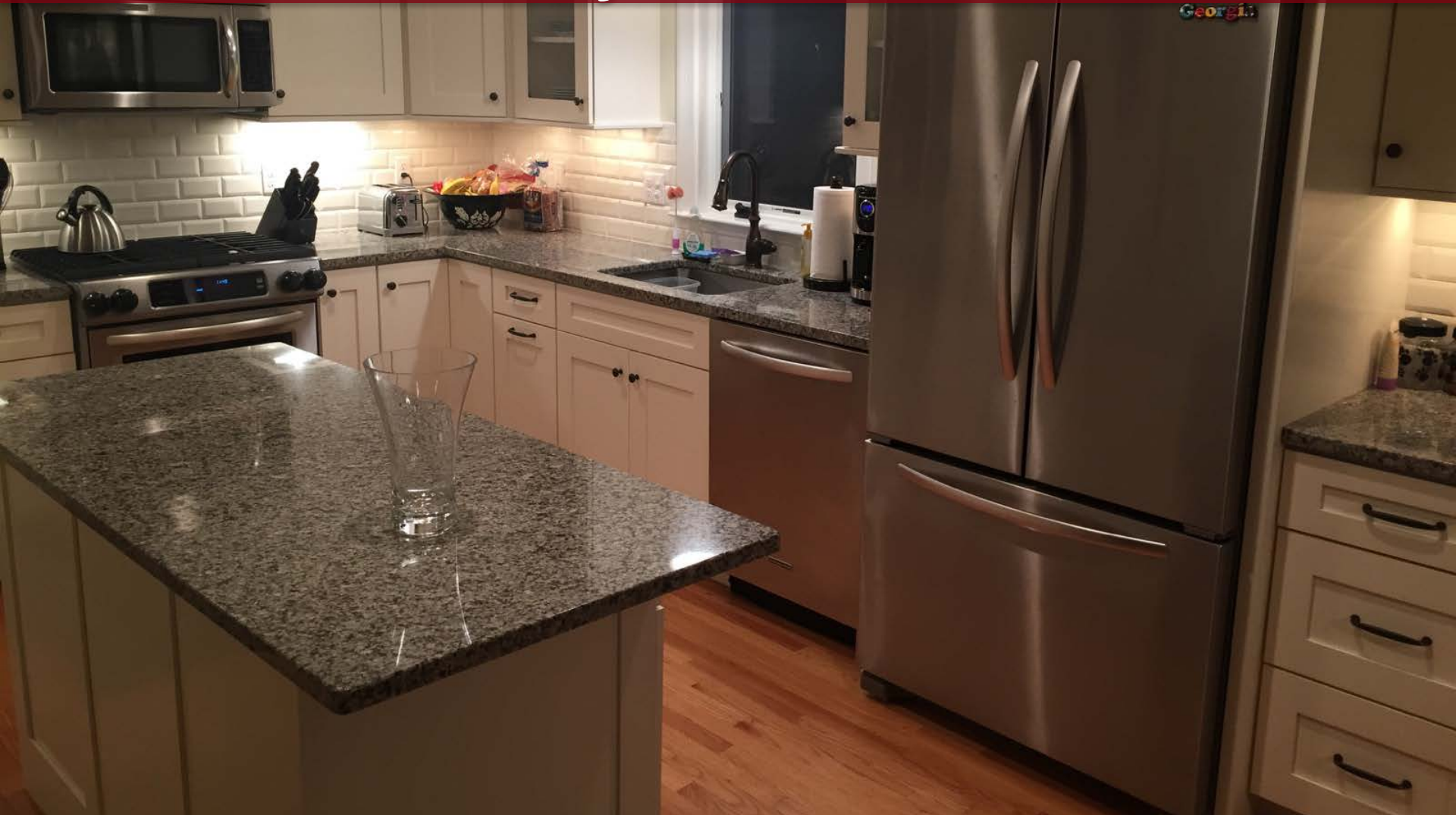
Contingency Reserves
used to manage known risks

Management Reserves
used for the unknown

Real World Example: My Kitchen



Real World Example: My Kitchen



Wrap Up, Questions, and Discussion



THANK YOU!

Email dvogt@berrydunn.com

Phone 207.541.2279

Website berrydunn.com

Blog berrydunn.com/firmfooting

